



Community Redevelopment Areas (CRA) Funds





Community Redevelopment Areas (CRA) Funds

Description: Downtown areas across America began to decline after WWII as suburbs developed and people moved from the City and into the outskirts and countryside. Construction of retail complexes, office buildings and service providers sprang up in these outlying areas pulling the businesses out of what once was a vibrant urban core of downtown areas. Historic buildings stood vacant and private investments were insufficient to maintain America's downtowns active. Property values dropped significantly resulting in a decline in property taxes.

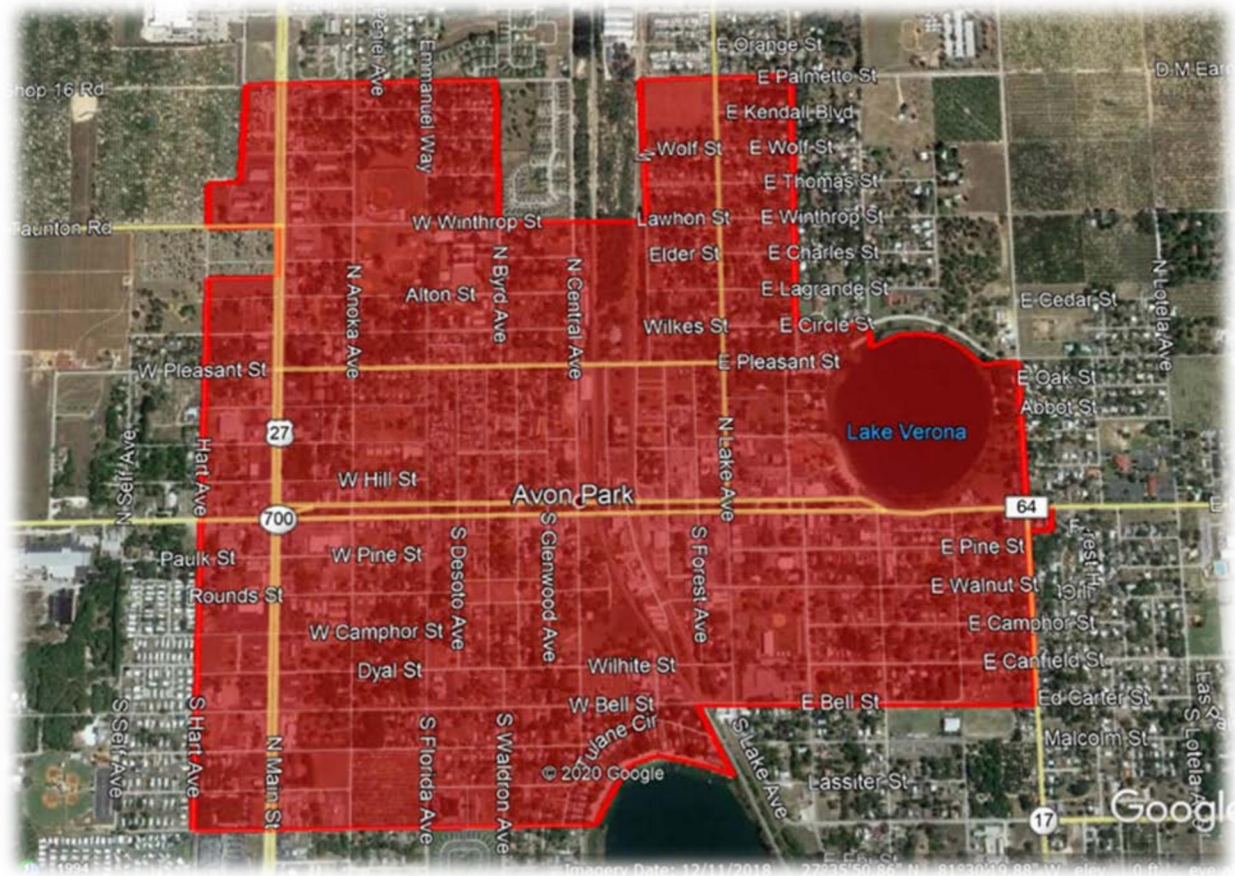
In the mid 1970's the State legislatures created a mechanism whereby communities could designate areas "blighted" - areas that are in need of redevelopment because certain conditions exist. Cities (later Counties) were given the power to create Community Redevelopment Agencies (CRAs) as Dependent Special Districts to eliminate slum and blighted conditions, restore economic vitality and the standard of living of residents in specific areas.

CRAs are a specifically focused financing tool for redevelopment. CRA Boards do not establish policy for the city or county - they develop and administer a plan to implement that policy. The CRA acts officially as body distinct and separate from the governing body, even when it is the same group of people. The CRA has certain powers that the city or county by itself may not have, such as establish tax increment financing and leverage local public funds with private dollars to make redevelopment happen. The term of a CRA is limited to 20 years, 40 years if extended.

BUDGET SUMMARY				
	MAINSTREET	SOUTHSIDE	AIRPORT	TOTAL
ESTIMATED REVENUES				
Intergovernmental	442,550	184,620	22,790	649,960
TOTAL SOURCES	442,550	184,620	22,790	649,960
Transfers In				0
Fund Balance/Reserves/Net Assets	777,220	236,840	122,850	1,136,910
TOTAL REVENUES, TRANSFERS & FUND BALANCES	1,219,770	421,460	145,640	1,786,870
ESTIMATED EXPENDITURES				
TOTAL EXPENDITURES	1,219,770	421,460	145,640	1,786,870
Operating Transfers Out				
Fund Balance/Reserves/Net Assets	(0)	0	0	0
TOTAL EXPENDITURES, TRANSFERS, AND FUND BALANCES	1,219,770	421,460	145,640	1,786,870



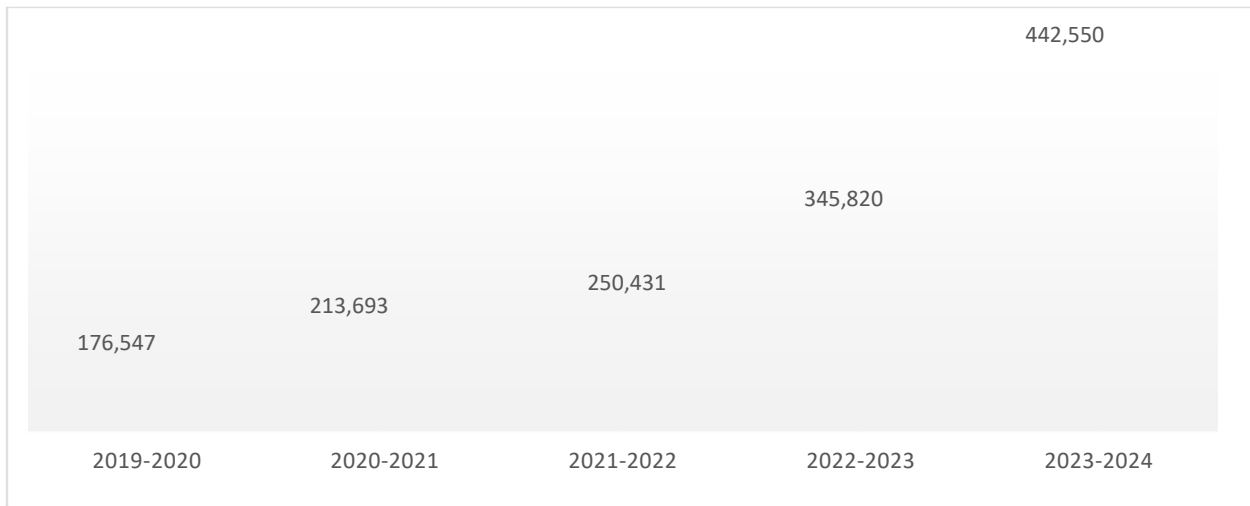
Mainstreet CRA





Mainstreet CRA (Cont.)

Revenue

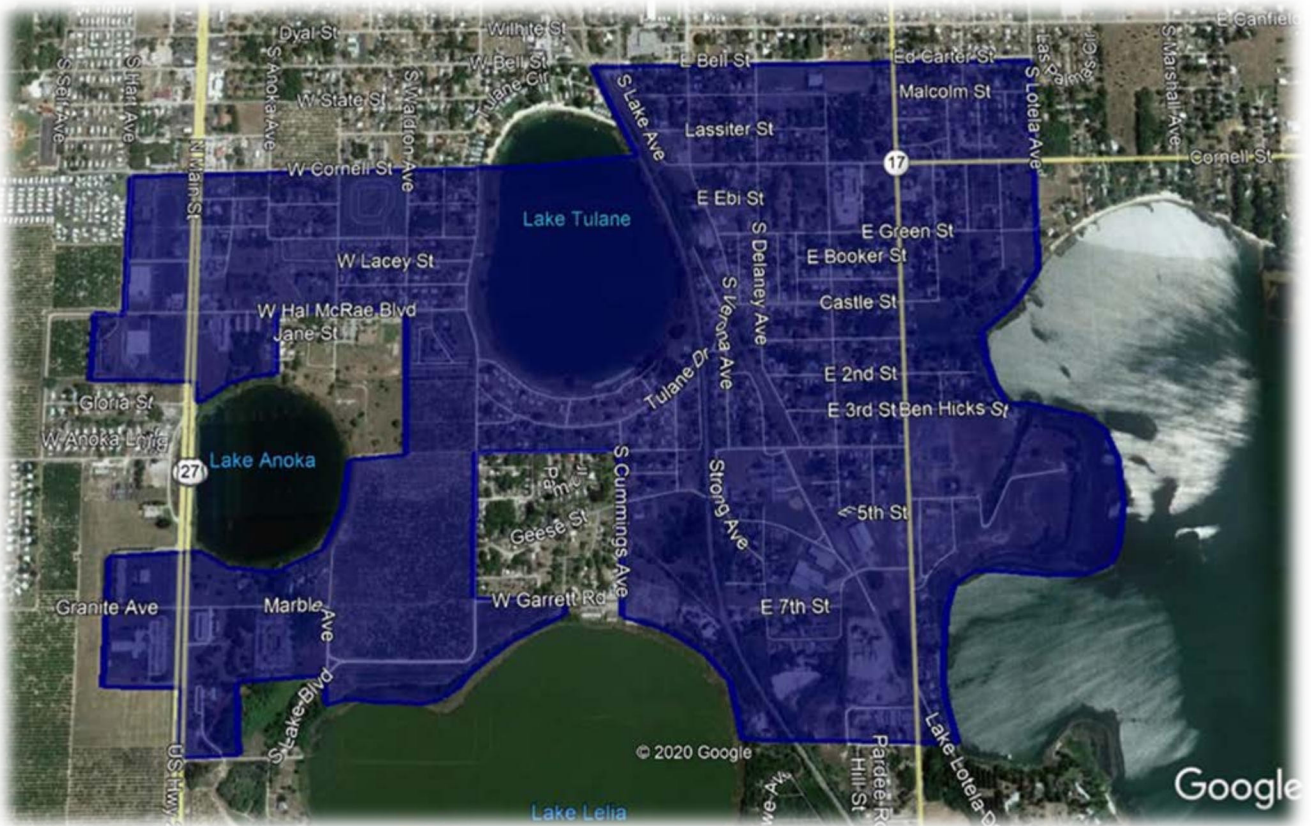


Expenses

COMMUNITY DEVELOPMENT		2019/2020	2020/2021	2021/2022	2022/2023	2023/2024
130-0552-552.12-00	REGULAR SALARIES & WAGES	-	-	-	-	29,040
130-0552-552.21-00	FICA	-	-	-	-	2,220
130-0552-552.22-00	FRS CONTRIBUTION CITY	-	-	-	-	3,940
130-0552-552.23-00	LIFE & HEALTH INSURANCE	-	-	-	-	290
130-0552-552.23-20	UHC	-	-	-	-	5,280
	TOTAL PERSONNEL COSTS	-	-	-	-	40,770
130-0552-552.32-00	ACCT AND AUDIT		1,000	844	2,000	2,750
130-0552-552.34-00	OTHER CONTRACTUAL SERVICE	1,725		3,250	6,150	5,400
130-0552-552.34-00	CRA COORDINATOR				40,000	-
130-0552-552.40-00	TRAVEL & PER DIEM	657	175	-	1,000	3,000
130-0552-552.46-40	MALL BEAUTIFICATION	-				100,000
130-0552-552.49-11	FACADE GRANTS	26,500		117,500	300,000	100,000
130-0552-552.49-11	DEMOS/FORECLOSURES				100,000	297,600
130-0552-552.49-15	GATEWAY	-	-	-		100,000
	SPECIAL PROJECTS					550,000
130-0552-552.49-41	SIGNS	-	-	-		19,650
130-0552-552.49-50	EVENT EXPENDITURES	4,610	39,907	12,000	25,000	-
130-0552-552.52-00	OPERATING SUPPLIES	-	58	1	100	100
130-0552-552.54-00	SUBSCRIPTION & MEMBERSHIP	82	140	140	150	100
	CONFERENCE					400
	TOTAL OPERATING COSTS	33,574	41,280	133,734	474,400	1,179,000
		33,574	41,280	133,734	474,400	1,219,770

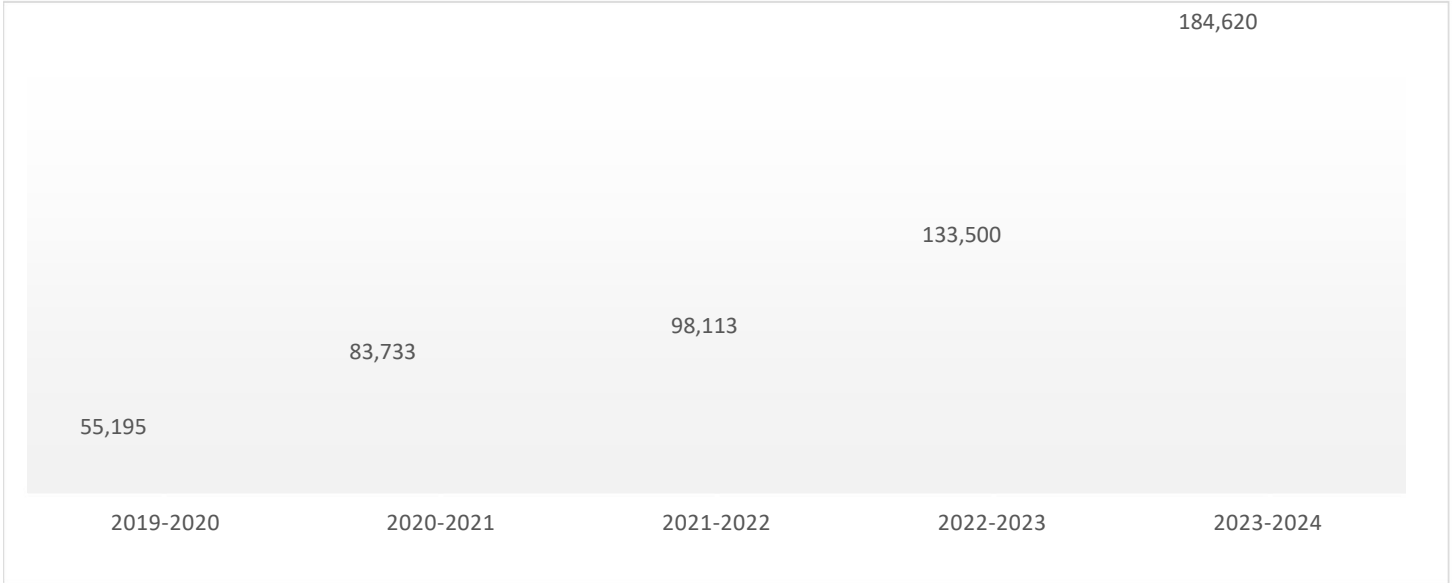


Southside CRA





Southside CRA (Cont.) Revenue

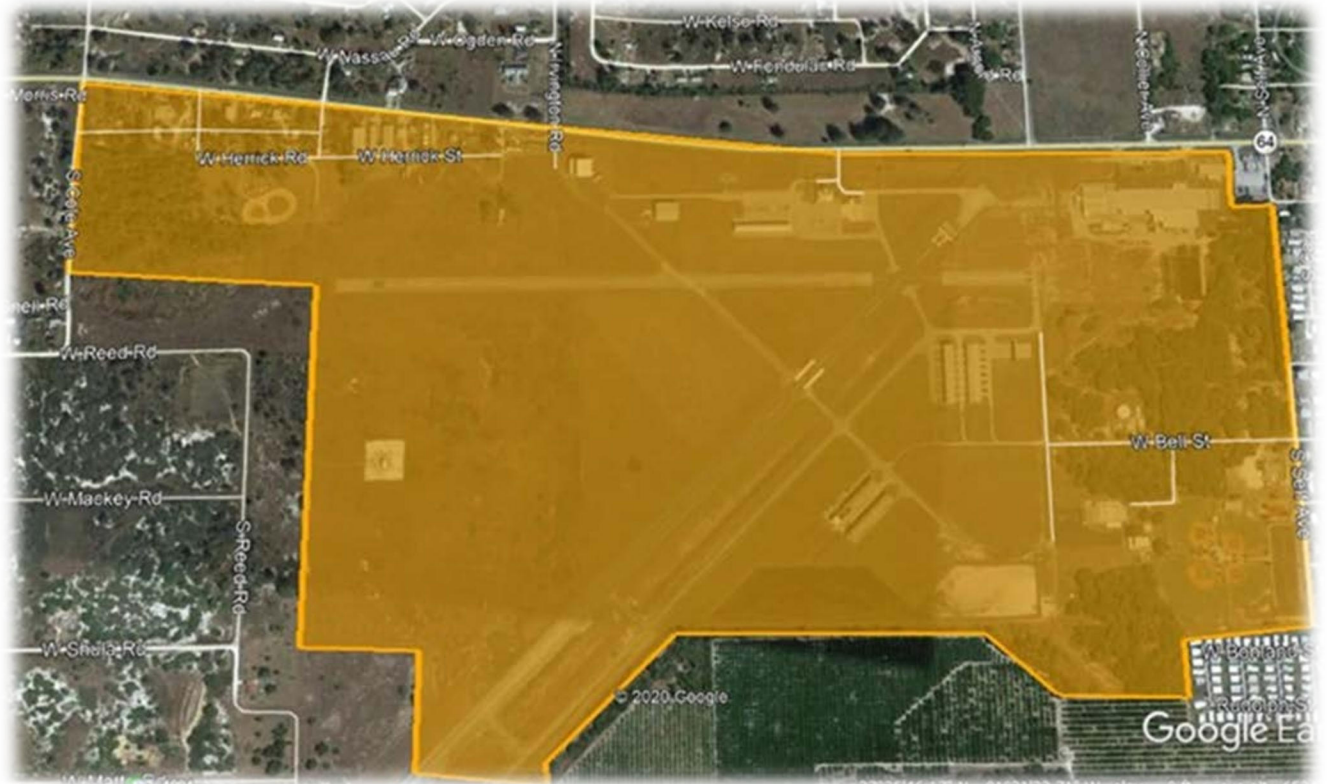


Expenses

CRA DISTRICT - SOUTHSIDE		2019-2020	2020/2021	2021/2022	2022/2023	2023/2024
135-0552-550.12-00	REGULAR SALARIES		-			14,960
135-0552-550.21-00	FICA		-			1,150
135-0552-550.22-00	FRS CONTRIBUTION CITY		-			2,030
135-0552-550.23-00	LIFE & HEALTH INS		-			290
135-0552-550.23-20	UHC		-			2,720
	TOTAL PERSONNEL COSTS		-	-	-	21,150
135-0552-550.32-00	ACCT AND AUDIT	-	1,000	844	1,000	1,000
135-0552-550.34-00	OTHER CONTRACT SERVICES	1,725	-	3,250	3,250	2,100
135-0552-550.34-00	CRA COORDINATOR				20,000	-
135-0552-550.40-00	TRAVEL AND PER DIEM	-	-	-	-	500
135-0552-550.49-10	FACADE GRANTS	-	-	62,552	110,000	110,000
135-0552-550.49-10	DEMOS/FORECLOSURES				50,000	100,000
	SPECIAL PROJECTS					186,560
135-0552-550.49-50	EVENT EXPENDITURES	-	-		10,000	-
135-0552-550.52-00	OPERATING SUPPLIES	-	-	68	-	-
135-0552-550.54-00	Membership and Dues	82	140	140	150	150
	TOTAL OPERATING COSTS	1,807	1,140	66,854	194,400	400,310
135-0552-550.92-21	TRANSFER TO AIRPORT		6,300	-	-	-
			-	6,300	-	-
		1,807	7,440	66,854	194,400	421,460

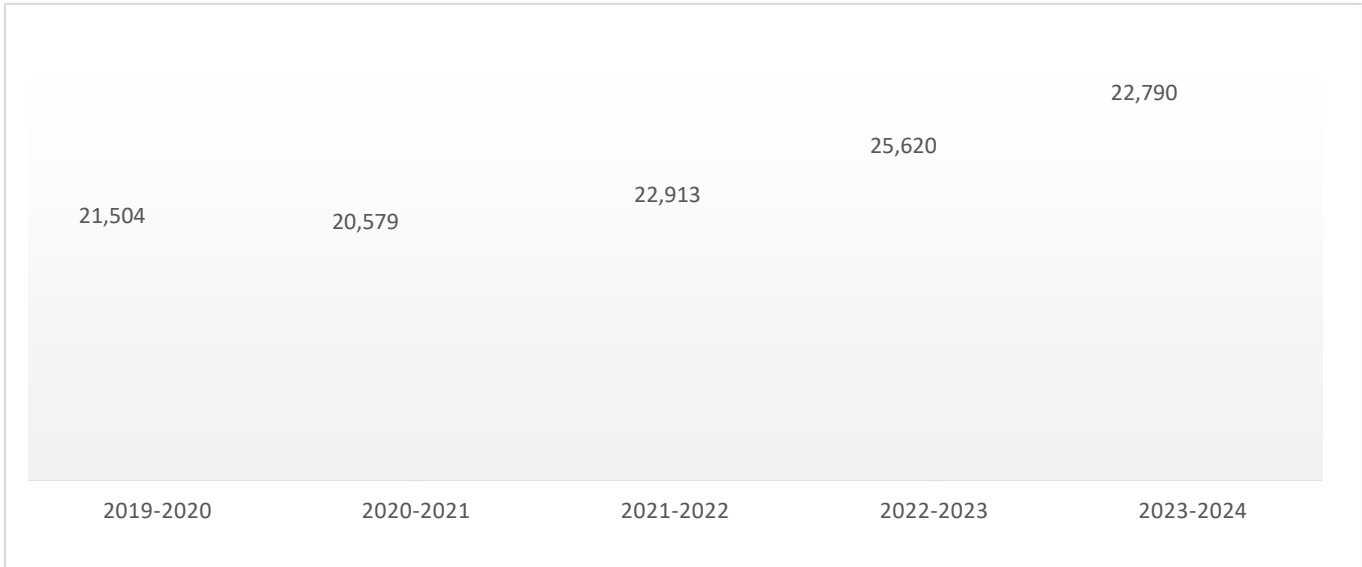


Airport CRA





Airport CRA (Cont.) Revenues



Expenses

CRA AIRPORT		2019-2020	2020/2021	2021/2022	2022/2023	2023/2024
138-0552-550.34-00	OTHER CONTRACT SERVICES	1,725	1,000	1,000	1,000	1,000
	DEMOLITIONS/FORECLOSURES					15,000
	SPECIAL PROJECTS					99,230
	SIGNS					30,000
138-0552-550.49-35	MATCHING GRANTS-BALL FIELDS			-	85,000	-
138-0552-550.54-00	MEMBERSHIPS & DUES	82	140	140	140	410
		1,807	1,140	1,140	86,140	145,640